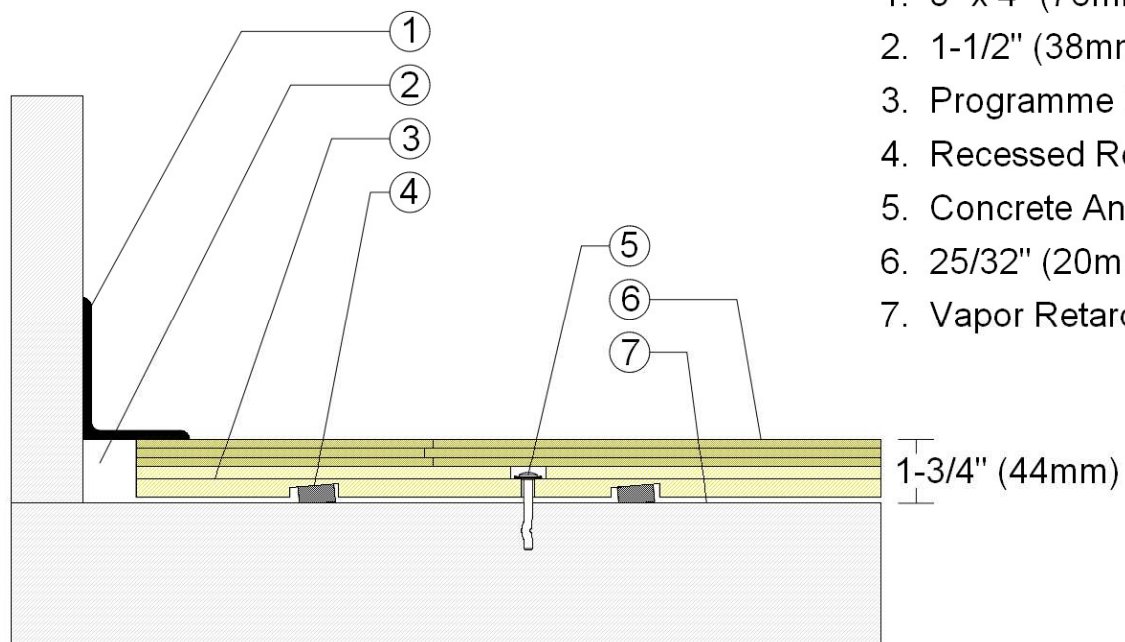




Revision	Description	Drawn By / Date
A	Programme III Stage – Maple Floor Surface	RR / 1-1-23

PROGRAMME III Stage Floor

F1 Maple Floor Surface Option



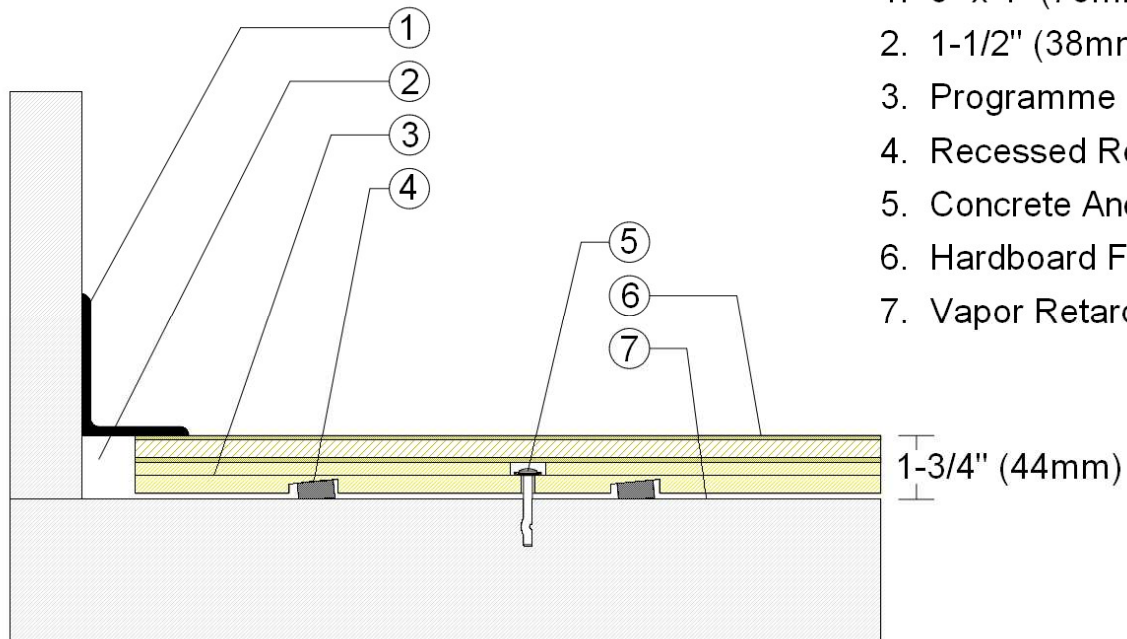
1. 3" x 4" (76mm x 101mm) Vent Cove Base
2. 1-1/2" (38mm) min. Expansion Space
3. Programme III Subfloor Panel
4. Recessed Resilient ECO Pad
5. Concrete Anchor Pin Assembly
6. 25/32" (20mm) MFMA Maple Flooring
7. Vapor Retarder



Revision	Description	Drawn By / Date
A	Programme III Stage – Hardboard Faced Laminate Surface	RR / 1-1-23

PROGRAMME III Stage Floor

F2 Hardboard Faced Laminate Panel Surface Option



1. 3" x 4" (76mm x 101mm) Vent Cove Base
2. 1-1/2" (38mm) min. Expansion Space
3. Programme III Subfloor Panel
4. Recessed Resilient ECO Pad
5. Concrete Anchor Pin Assembly
6. Hardboard Faced Laminate Panel
7. Vapor Retarder

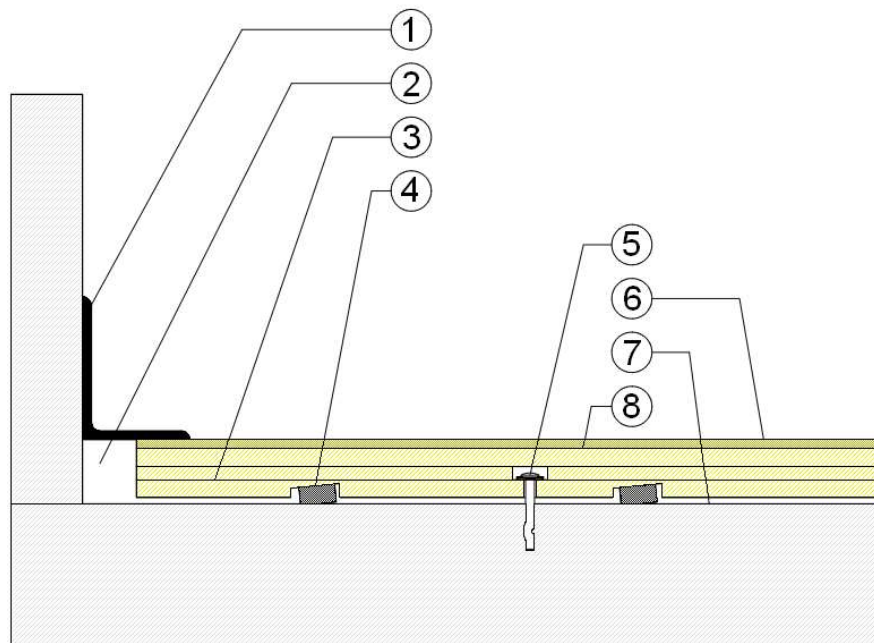


Revision	Description	Drawn By / Date
A	Programme III Stage – Hardboard Floor Surface	RR / 1-1-23

PROGRAMME III Stage Floor

F3 Hardboard Surface Option

[Added 15/32" (12mm) plywood layer]



1. 3" x 4" (76mm x 101mm) Vent Cove Base
2. 1-1/2" (38mm) min. Expansion Space
3. Programme III Subfloor Panel
4. Recessed Resilient ECO Pad
5. Concrete Anchor Pin Assembly
6. 1/4" (6mm) Hardboard Surface Layer
7. Vapor Retarder
8. 15/32" (12mm) Added Plywood Layer

1-3/4" (44mm)

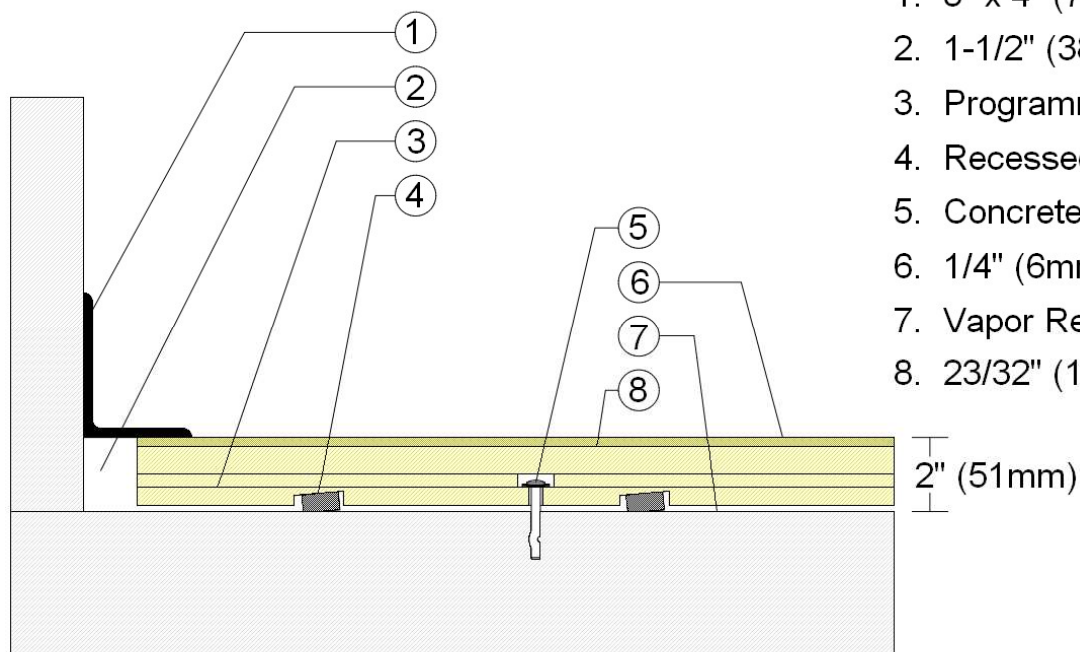


Revision	Description	Drawn By / Date
A	Programme III Stage – Hardboard Floor Surface	RR / 1-1-23

PROGRAMME III Stage Floor

F3 Hardboard Surface Option

[Added 23/32" (19mm) plywood layer]



1. 3" x 4" (76mm x 101mm) Vent Cove Base
2. 1-1/2" (38mm) min. Expansion Space
3. Programme III Subfloor Panel
4. Recessed Resilient ECO Pad
5. Concrete Anchor Pin Assembly
6. 1/4" (6mm) Hardboard Surface Layer
7. Vapor Retarder
8. 23/32" (19mm) Added Plywood Layer